



Product Catalog

CRS Products

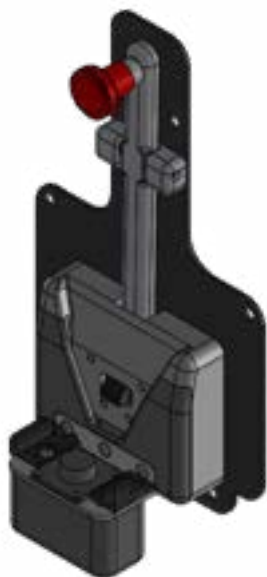


Table of Contents

ZOLL®	2
Brackets	4
Brackets for CRX modular device accessories	5
Bags	8
Others	10
Stryker®	11
Brackets	11
Others	12
Others accessories	13
Contacts	14

DEVELOP SOLUTIONS TOGETHER

Since 2004, we have been providing services for our customers in the field of medical technology.

Our 20+ years of experience and extensive knowledge in the medical technology sector have made us a dynamic and powerful medium-sized company. Today CRS medical, based in Asslar

Germany, has more than 200 employees and is represented on almost every continent of the world. Our mission is to provide customers with targeted, safe and precise solutions. Direct and committed cooperation with the customer enables us to achieve innovative and demand-oriented solutions that meet high requirements in terms of safety and functionality.

Professionalism, flexibility and discretion make us a valuable partner in all of our business units:
Service, Data Solutions and Products.



Brackets



Productno./ UDI-DI	Name	Description
1042100050/ 04251964600195	Wall Fastening M2 w/o power	Bracket for ZOLL M2® Only in combi- nation with original ZOLL M2 EMS bag

Not available in all regions



Productno.	Name	Description
1042100002	Bracket AED Plus	Bracket for ZOLL AED Plus® Only in combination with Softbag AED Plus



Productno.	Name	Description
1042100001	Bracket AED Pro	Bracket for ZOLL AED Pro® Only in combination with Softbag AED Pro



Productno.	Name	Description
1042100004	Bracket AED 3 for BLS Bag	Bracket for ZOLL AED 3® Only in combination with original ZOLL AED 3 BLS bag

Brackets for CRX modular device accessories Zoll X Series® and Propaq MD®

Productno./ UDI-DI	Name	Description	Combinable with
1042100010/ 04251964600126	Adaption CRX w/o power	X Series adapter without power supply	P/N: 1042100012 P/N: 1042100015 P/N: 1042100020



Productno./ UDI-DI	Name	Description	Combinable with
1042100011/ 04251964600003	Adaption CRX w power	X Series adapter with power supply	P/N: 1042100013 P/N: 1042100016 P/N: 1042100021



Productno./ UDI-DI	Name	Description	Combinable with
1042100012/ 04251964600096	Wall Fastening CRX w/o power	Wall bracket without power supply for the ZOLL X Series®	P/N: 1042100010



Productno./ UDI-DI	Name	Description	Combinable with
1042100013/ 04251964600089	Wall Fastening CRX w power	Wall bracket with power supply for the ZOLL X Series®	P/N: 1042100011 P/N: 1042100014





Productno./ UDI-DI	Name	Description	Combinable with
1042100014/ 04251964600072	Power Supply Fastening CRX	Mounting assembly for original ZOLL X Series® power supply. Both AC/DC and DC/DC variants	P/N: 1042100013 P/N: 1042100016 P/N: 1042100021

*Specifications subject to change without notice.



Productno./ UDI-DI	Name	Description	Combinable with
1042100015/ 04251964600119	Wall Fastening CRX Lite w/o power	Compact wall bracket without power for the ZOLL X Series®	P/N: 1042100010



Productno./ UDI-DI	Name	Description	Combinable with
1042100016/ 04251964600102	Wall Fastening CRX Lite w power	Compact wall bracket with power for the ZOLL X Series®	P/N: 1042100011 P/N: 1042100014



Productno./ UDI-DI	Name	Description	Combinable with
1042100017/ 04251964600065	Wall Swivel CRX	Wall swivel bracket for the ZOLL X Series® up to 90 degrees	P/N: 1042100015 P/N: 1042100016



Productno./ UDI-DI	Name	Description	Combinable with
1042100020/ 04251964600034	Desktop Fastening CRX w/o power	Table mount without power for ZOLL X Series®	P/N: 1042100010

Productno./ UDI-DI	Name	Description	Combinable with
1042100021/ 04251964600041	Desktop Fastening CRX w power	Table mount with power for ZOLL X Series® Note: Please specify the side of the power connection.	P/N: 1042100011 P/N: 1042100014



Productno./ UDI-DI	Name	Description	Combinable with
1042100024/ 04251964600058	Desktop CRX Swivel Plate	Swivelling attachment for Desktop CRX	P/N: 1042100020 P/N: 1042100021



Productno./ UDI-DI	Name	Description	Combinable with
1042100019/ 04251964600133	CRX Lite Rail Adapter	Tool-free fastening on standard rails with 200mm rail spacing	P/N: 1042100015 P/N: 1042100016



Bags



Productno.	Name	Description	Combinable with
1042101002	Softbag AED Plus	Bag for ZOLL AED Plus®	



Productno.	Name	Description	Combinable with
1042101009	Softbag AED Pro	Bag for ZOLL AED Pro®	



Productno.	Name	Description	Combinable with
1042101007	Softbag AED 3	Bag for ZOLL AED 3™	



Productno.	Name	Description	Combinable with
1042101010	Softbag X Series exp. blue	Bag for ZOLL X Series®	



Productno.	Name	Description	Combinable with
1042101005	Softbag X Series exp. black	Bag for ZOLL X Series®	

Productno.	Name	Description	Combinable with
1042101006	Softbag X Series exp. paddle	Bag for ZOLL X Series® with original ZOLL paddle wells	



Productno.	Name	Description	Combinable with
1042101004	Shoulder Strap X Series black	Shoulder strap für Softbag X Series exp. black & Softbag X Series exp. paddle	



Productno.	Name	Description	Combinable with
1042101011	Shoulder Strap X Series blue	Shoulder strap for Softbag X Series exp. blue	



Others



Productno.	Name	Description	Combinable with
1042100025	X Series Bed Connector	Stretcher and bed hanger for ZOLL X Series®	

Brackets for LP 15 modular device accessories Stryker LIFEPAK® 15

Productno.	Name	Description	Combinable with
1042100040	LP15 Wall Fastening w/o power	Bracket without power for Stryker LIFEPAK® 15	P/N: 1042100041



Productno.	Name	Description	Combinable with
1042100043	LP15 Wall Fastening w power	Bracket with power for Stryker LIFEPAK® 15	P/N: 1042100041 P/N: 1042100042 P/N: 1042100045



Productno.	Name	Description	Combinable with
1042100041	LP15 Adaption w/o power	LP 15 adapter for insertion into the LP 15 Wall Fastening	P/N: 1042100040 P/N: 1042100043



Productno.	Name	Description	Combinable with
1042100042	LP15 Power Adapter	Device-side adapter for charging function	P/N: 1042100043



Productno.	Name	Description	Combinable with
1042100045	LP15 Power Supply Fastening*	Mounting assembly for original LIFEPAK® 15 power supply	P/N: 1042100043



*Specifications subject to change without notice.

Others



Productno.	Name	Description	Combinable with
1042100044	LP15 Bed Connector	Stretcher and bed hanger for Stryker LIFEPAK® 15	

Others accessories

Productno.	Name	Description	Combinable with
1042100408	CRS ResQ	Emergency back-pack for transporting an AED and materials for wound care	



Contacts

CRS Products

Phone: +49 (0) 6441 38331 - 0

E-Mail: EMS-Produkte@crs-medical.com

Sales Manager

Tyler Plante

Phone: +49 (0) 6441 38331 - 124

E-Mail: Tyler.Plante@crs-medical.com



CRS medical GmbH

Loherstraße 6
D-35614 Aßlar

Tel: +49 6441 38331-0
Fax: +49 6441 38331-29
Web: www.crs-medical.com
E-Mail: info@crs-medical.com